

you can  
**Canon**

iRC2880i  
iRC2880  
iRC3380i  
iRC3380

Multifunctional Printer

The smarter way  
to use colour



# Introducing total colour multifunctionality

High quality

Cost efficient

Secure

Priorities for any business are straightforward when it comes to print: keep costs low, make the device easy to use, and enable high levels of control and security. The compact iRC2880/i and iRC3380/i deliver in every area. They're also the perfect multifunctional printers for the most demanding office environments, giving you the ability to print, copy, scan and fax in top-quality colour with professional finishing options.

## Colour printing that saves time and money

Whether you're printing in colour or black & white, the iRC2880/i and iRC3380/i make managing your print budget easier than ever, thanks to a wide range of tools, including features which enable you to control user access and privileges to the device. The iRC2880/i and iRC3380/i devices also offer Auto Colour Sensing (ACS). This intelligently detects which pages within a document contain colour, and automatically switches the output from colour to black & white as required, helping fix the price per page. By having a fixed price per page, you only pay for colour when it is used.

**Affordable colour**

## Flexible print management

Canon's Department ID and the optional iWAM MEAP software detail who prints what, where and when. You can control the amount of colour used, setting individual or departmental quotas, by managing password access to the smart colour capability.

## A smarter way to work

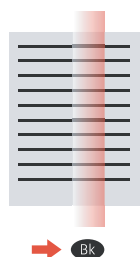
The iRC2880i and iRC3380i are network-ready. The optional EFI Controller, ideal for the iRC2880 and iRC3380 versions, enhances performance and offers True Adobe Postscript, so that everyone in your workgroup can use them the way they need to.

## Easy maintenance for minimal downtime

iW Management Console (iWMC) is a web-based utility that facilitates centralised management of networked devices. This standard feature enables remote management of device settings, discovery of new devices using automated tasks, and device error notifications via email regarding low toner and device maintenance problems so they can be dealt with easily and quickly, ensuring minimal downtime. It also allows administrators to easily replicate settings and address books across multiple devices. Canon's unique e-Maintenance system automatically reports any problems to Canon service centres and Canon partners, so you don't need to worry about constant monitoring.

**Effortless control**

Colour not present



Colour present



Auto Colour Sensing helps reduce costs



### Device, data and network security

Canon's top-level security features offer great options, including department, individual and simple device log on, ensuring documents are safely stored and remain confidential until you can print them. For maximum security, you can even conceal the job log history.

The iRC2880/i and iRC3380/i include features to help you guard against unauthorised access to the device and its data.

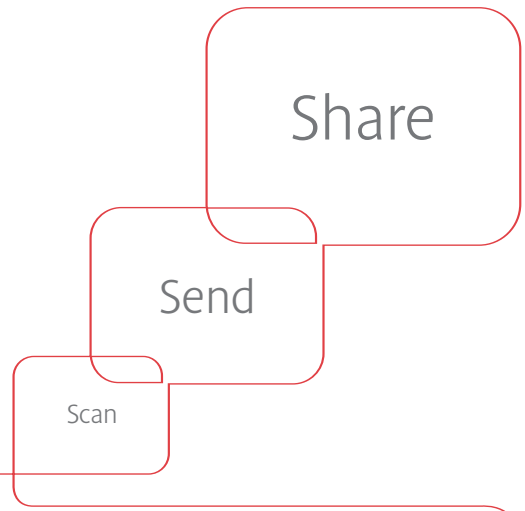
#### Stay secure

In addition to user authentication, they can also restrict access by network or IP/MAC address. With Canon's printer security option, data on the device hard drive can be secured with 128-bit encryption technology and set to automatically overwrite traces of previously stored data.



The iRC2880/i and iRC3380/i, and the HDD Data Encryption Kit containing the Canon MFP Security Chip 1.00, qualify for EAL3 status under the Common Criteria Program. The Common Criteria Program, also known as ISO 15408, is the recognised global standard for information technology security evaluations and defines security requirements and establishes procedures for evaluating IT security.

# Everything you need in one device



The iRC2880/i and iRC3380/i are fully multifunctional devices. That means you don't need to have, or manage separate hardware for printing, copying, faxing, scanning or sending at speed. You save money on capital expenditure, save time on management and, because our printers have small footprints, you save even more on space.

## Fast, high-quality colour

The high speed capabilities of the iRC2880/i and iRC3380/i give you perfect high-quality colour prints, quickly, every time.

Canon's pioneering 4-drum laser engine means that heavier stock can be colour printed easily.

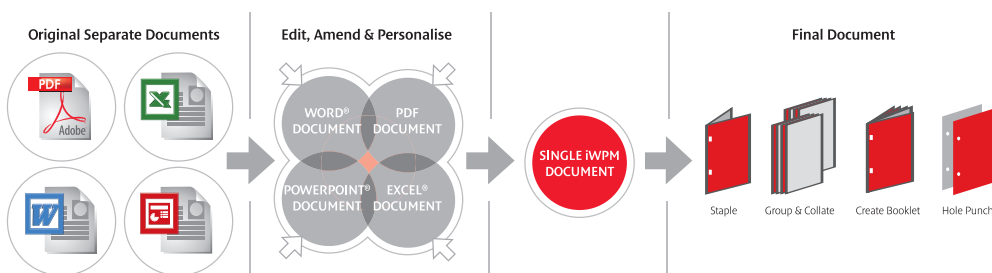
**Perfect colour**

And the new QF toner ensures a more uniform distribution of colour onto the page, giving you a perfect matt finish.

## Better results with professional finishing

With finishing features including folding, back and front covers and hole punch, it's quick, easy and cost-effective to create a variety of full finished reports and other professional documents from your office.

Plus, the iWPM software enhances productivity further. When you want to create a report combining information from different files such as Word or Excel, iWPM lets you carry out the collation effortlessly and electronically at your desktop, prior to printing a completed version, instead of spending valuable time printing and then manually collating.





### Scan and send easily

With Canon's multifunctional printers you can scan black & white or colour documents fast with high-quality results: 44 images per minute (ipm) for scanning A4 at 300dpi. Then, with Canon's Universal Send technology, you simply distribute them to multiple network destinations in one easy operation.

Alternatively, add eCopy document distribution software and users can send hardcopy documents electronically straight from the multifunctional printer to file, e-mail, ftp site or directly into a document management system – saving you time and effort.

### Maximise productivity

Colour file compression, such as that available through PDF high compression mode, stops network congestion and keeps network traffic at a minimum, helping users to continue working even when a large file is being printed.

### Secure digital documents

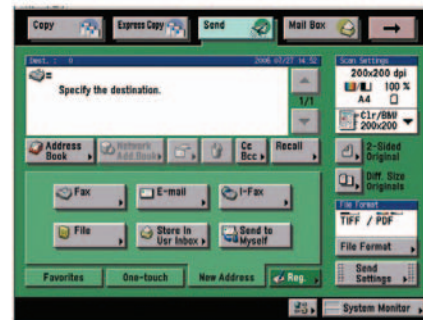
It's simple to keep your documents confidential with the number of security options on offer, including:

**Privacy matters**

*Password-protected printing* – secure mail box printing aids versatility and confidentiality. Any document can be scanned, sent to or printed directly from the mail box at your convenience.

*Secure watermarks* – users can embed secure watermarks that appear when copies are made to help prevent security leaks of confidential information.

*Encrypted secured print* – encrypt your documents before they are sent over the network and decrypt and print only after the correct password is entered on the device.



*Digital Device Signature* – assures recipients of the origination of documents.

You can also protect the contents of your documents with the encrypted PDF feature, and secure them with a password to restrict access, editing, and printing.

Among the many other features are Canon's exclusive Trace & Smooth PDF feature for increased readability, while the searchable PDF feature makes finding text extra easy.

# Next-generation features for professional-standard results

The range of finishing options on the iRC2880/i and iRC3380/i means you can produce professional documents quickly and easily without the hassle and expense of outsourcing.

## From simple documents to professional finishing

Making your documents look like the real deal is easy with the iRC2880/i and iRC3380/i.

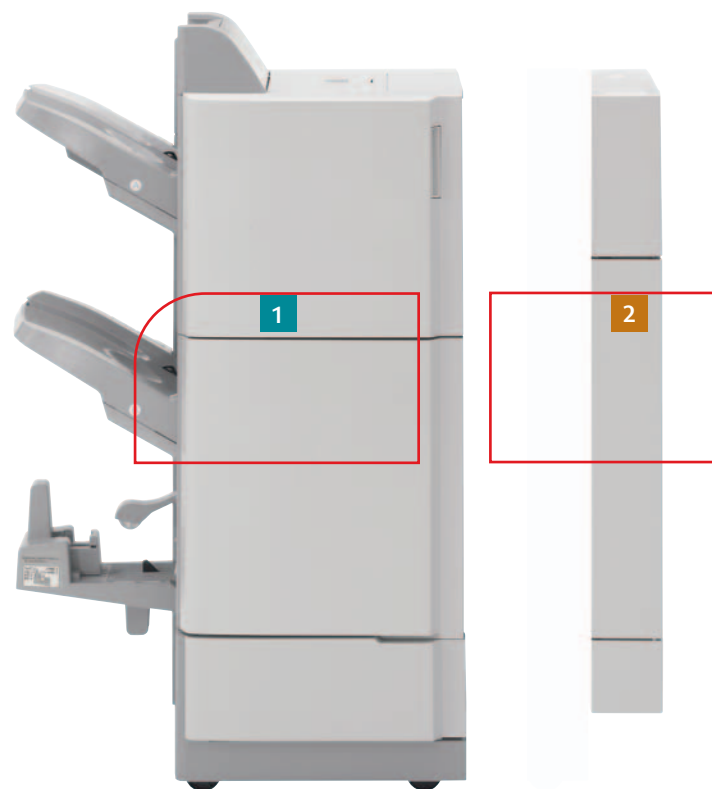
**1** With no more than a few simple mouse clicks, and the Saddle Finisher Y2, you can produce automatically folded booklets – even up to A4 in size. Buffer Pass Unit E2 is required.

**2** Increase productivity by adding hole punch capability to the functionality of the finisher.

**3** For extra copies or heavier workloads, the Finisher Y1 is ideal with its two trays and a 2,000 sheet capacity. It also accommodates 50 sheet stapling for sturdier report production. Buffer Pass Unit E2 is required.

- 1** Saddle Finisher Y2\*
- 2** Hole Puncher Unit\*
- 3** Finisher Y1\*
- 4** DADF L1\*
- 5** Internal Finisher Z1\*
- 6** Applications Technology
- 7** Paper Cassette
- 8** Cassette Feeding Unit Y3\*
- 9** Side Paper Deck Z1\*
- 10** Stack Bypass

\*Optional



**4** A 50 sheet document feeder (DADF) helps cope with scanning and sizeable copy runs, accommodating documents with different sized pages.

**5** Transform a simple colour report into a fully stapled document with the optional internal Finisher Z1. Staple capacity is 50 sheets of A4, with a capacity of 500 A4 - A5R in a single print run.

**6** Using the Multifunctional Embedded Application Platform (MEAP), Canon's Java based application platform, enables new and customised software to be incorporated directly within your device. This way you can future proof your investment. Plus, the device also adheres to the strictest environmental standards such as RoHS, which restricts the use of hazardous substances.

**7** Two cassettes are equipped as standard.

**8** A total of 4,950 sheets gives huge versatility from 6 different sources, including optional additional trays, allowing you to produce stunning colour documents combining different media types and weights.

**9** Configure the iRC2880/i and iRC3380/i with the 2,700 sheet Paper deck and you have a comprehensive paper supply equipped for the most demanding workloads. Each of the 550 sheet cassettes are user-adjustable to cope with paper sizes between A5-SRA3.

**10** The 50 sheet stack bypass accommodates a variety of media up to 220gsm.



**Handy hints on cutting costs**

- The iRC2880/i and iRC3380/i aid efficiency (and help the environment, too).
- Print documents using both sides of paper and you can reduce paper consumption and costs as well.
- A sleep mode helps cut down on power consumption when not in use.



# Specifications iRC2880/i / iRC3380/i

Type	Desktop
Maximum Original Size	A3
Copy Sizes	305x457mm, A3, A4, A4R, A5R
Cassette	A5R- SRA3 (320x450mm), Envelopes
Stack Bypass	99x140mm to 320x457mm
Resolution	600dpi_600dpi
Reading Copying	600dpi_600dpi
Copy/Print Speed	256 Gradations
A4	33ppm B&W(iRC3380/i), 28ppm(iRC2880/i)
A3	30ppm full colour(iRC3380/i), 26ppm(iRC2880/i)
Magnification	15ppm B&W(iRC3380/i & 2880/i)
Zoom	15ppm full colour(iRC3380/i & 2880/i)
Fixed	25-400%
First copy time	25%,50%,71%,100%,141%,200%,400%
Black-and-White	5.9sec(iRC3380/i & 2880/i)
Full Colour	8.9sec(iRC3380/i & 2880/i)
Warm-Up Time	38 seconds(iRC3380i & 2880i), 30 seconds (iRC3380 & 2880)
Multiple Copies/Prints	1 to 999 sheets
Duplexing	Standard automatic stackless
Paper weight	Standard automatic stackless
Cassette	64 to 163g/m <sup>2</sup>
Stack Bypass	64 to 220g/m <sup>2</sup>
Duplex	64 to 105g/m <sup>2</sup>
Paper Capacity	550 sheets x2 cassettes (80g/m <sup>2</sup> )
Standard	50 sheets (80g/m <sup>2</sup> )
Stack Bypass:	550 sheets x2 cassettes (80g/m <sup>2</sup> )
Optional	2,700 sheets (80g/m <sup>2</sup> )
Paper Deck	4,950 sheets
Total capacity	Canon Custom Processor, 533MHz+400MHz
CPU	1.5GB(iRC3380i/2880i), 1.0GB(iRC3380/2880)
Memory	80GB
Hard Disk Drive	Ethernet (100Base-TX/10Base-T)_USB2.0
Interface	220-240V AC, 50/60Hz
Power Supply	1.5 kW max.
Power Consumption	565 x 755 x 791mm
Dimensions (WxDxH)	Approx.116kg
Weight	
<b>COLOUR UFR II/PCL PRINTER KIT-Q1</b>	<b>(Standard for i model)</b>
PDL	PCL5c, UFR II
Resolution	Data Process - 1200dpi x 1200dpi(Text/Line only, Half Speed), 600dpi x 600dpi
PCL5c	Up to 2400equi x 600dpi
UFR II	Up to 2400equi.x600dpi, 2400equi.x1200dpi(Half Speed)
Memory	1.5GB(iRC3380i/2880i), 1.0GB(iRC3380/2880)
Hard Disk	Uses Main Unit HDD
CPU	80GB (Uses Main unit HDD)
PS Fonts	533MHz & 400MHz (Uses Main unit CPU)
PCL Fonts	Roman136
Supported OS	Windows 98/Me/2000/XP/Server2003
UFR II	Windows 2000/XP/Server2003, Mac OSX (10.2.8 or later)
Interface	Ethernet(100Base-TX/10Base-T), USB 2.0
Network Protocol	TCP/IP(LPD/Port9100/IPP/PPS/SMB/FTP), IPX/SPX(NDS, Bindery), AppleTalk
Pull Scan	Network TWAIN Driver (75 to 600dpi 24bit colour /8bit grayscale/Black & white)
<b>COLOUR PS PRINTER KIT-Q1</b>	<b>(Optional for i model or UFR II/PCL Printer Kit-Q1)</b>
PDL	PostScript3 Emulation
Resolution	Data Process - 1200dpi x 1200dpi(Text/Line only, Half Speed), 600dpi x 600dpi
PS	Up to 2400equi.x600dpi, 2400equi.x1200dpi(Half Speed)
PS Fonts	Roman136
Supported OS	PS - Windows 98/Me/2000/XP/Server2003, Mac OSX (10.2.8 or later)
Mac-PPD	Mac OS9.2.2 or later
<b>COLOUR NETWORK PRINTER UNIT-J1</b>	<b>(EFI Optional for iRC3380/ iRC2880)</b>
PDL	Adobe PostScript 3, PCL 5c
Resolution	Data Process; 600 x 600 dpi, 1200 x 1200 dpi (text only, half speed)
Memory	256 MB to 512 MB (optional)
Hard Disk	80GB
CPU	Celeron M 1.2Ghz
<b>COLOUR UNIVERSAL SEND KIT-H1</b>	<b>(Standard for i model)</b>
Scan Speed	A4 44 ipm 300dpi (Colour/B&W) with DADF
Scan Resolution	100dpi,150dpi,200x100dpi,200dpi, 200x400dpi,300dpi,400dpi,600dpi
Destinations	E-Mail/Internet FAX(SMTP), PC(SMB,FTP,NCP), IWDM(FTP), WebDAV
Address book	LDAP, Local(Max.1800)
File Format	Single page - TIFF, JPEG, PDF
Multi page	TIFF, PDF
<b>SOFTWARE</b>	<b>(optional)</b>
	iWAM MEAP, eCOPY, iWPM, iWDM

<b>UNIVERSAL SEND PDF ADVANCED FEATURE SET-A1</b>	<b>Format</b>	PDF - High Compression PDF, Searchable PDF(OCR), Scalable PDF(Trace and Smooth)
	<b>Resolution</b>	High Compression PDF 300dpi(Colour only)
	<b>Searchable PDF</b>	300dpi
	<b>Scalable PDF</b>	300dpi
<b>UNIVERSAL SEND PDF SECURITY FEATURE SET-A1</b>	<b>Format</b>	PDF - Encrypted PDF, PDF with device signature.
	<b>Resolution</b>	Encrypted PDF
		100dpi,150dpi,200x100dpi,200dpi, 200x400dpi,300dpi,400dpi,600dpi
		100dpi,150dpi,200x100dpi, 200dpi,200x400dpi,300dpi,400dpi,600dpi
<b>DIGITAL USER SIGNATURE PDF KIT-A1</b>	<b>Format</b>	PDF, PDF with user signature.
	<b>Resolution</b>	100dpi, 150dpi, 200x100dpi,200dpi, 200x400dpi,300dpi,400dpi,600dpi
<b>DADF-L1</b>	<b>Paper size</b>	A3, A4, A4R, A5, A5R
	<b>Paper weight</b>	42 to 128 g/m <sup>2</sup>
	<b>Single sided original</b>	50 to 128 g/m <sup>2</sup>
	<b>Double sided original</b>	50sheets (80 g/m <sup>2</sup> )
	<b>Max. Number of originals</b>	
	<b>Docu Scanning speed (max.)</b>	
	<b>Copy</b>	A4 28 ipm 600dpi (Colour/B&W)
	<b>Scan</b>	A4 44 ipm 300dpi (Colour/B&W)
	<b>Dimensions (WxDxH)</b>	565 x 538 x 122 mm
	<b>Weight</b>	Approx.8.5kg
<b>CASSETTE FEEDING UNIT-Y3</b>	<b>Type</b>	2 Front-loading adjustable drawers
	<b>Paper Size</b>	305x457mm, A3, A4, A4R, A5R
	<b>Paper Weight</b>	64 to 163 g/m <sup>2</sup>
	<b>Paper Capacity</b>	550 sheets (80 g/m <sup>2</sup> ) x 2 cassettes
	<b>Dimensions(W x D x H)</b>	565 x 700 x 251.5 mm
	<b>Weight</b>	Approx. 23 kg
<b>PAPER DECK-Z1</b>	<b>Paper Size</b>	A4
	<b>Paper Weight</b>	64 to 105 g/m <sup>2</sup>
	<b>Paper Capacity</b>	2,700 sheets (80g/m <sup>2</sup> )
	<b>Dimensions(W x D x H)</b>	372 x 591x 473 mm
	<b>Weight</b>	Approx.30 kg
<b>FINISHER-Z1</b>	<b>Number of trays</b>	One stack tray (Inner)
	<b>Tray capacity</b>	A4, A5, A5R, A4-A5R :500 sheets
		A3, A4R, A3: 250 sheets
	<b>Staple position</b>	Corner, Double
	<b>Staple capacity</b>	A4: 50 sheets
		A3: 30 sheets
	<b>Dimensions(W x D x H)</b>	493 x550x 217mm
	<b>Weight</b>	Approx.13.1 kg
<b>FINISHER-Y1/SADDLE FINISHER-Y2</b>	<b>Number of trays</b>	2 Trays
	<b>Tray capacity</b>	A4, A5, A5R, 1,000sheets Max(A4)
		A3, A4R, 500sheets Max(A4)
	<b>Staple position</b>	Corner, Double, Saddle Stitch(Y2 only)
	<b>Staple capacity</b>	A4, 50 sheets(80g/m <sup>2</sup> )
		A3, A4R, 30 sheets(80g/m <sup>2</sup> )
	<b>Dimensions (W x D x H)</b>	Y1, 643 x 657 x 1073mm
		Y2, 747 x 657 x 1073mm
	<b>Weight</b>	Y1, 43.6kg
		Y2, 73.6kg
<b>SADDLE STITCH SPECIFICATIONS</b>	<b>(Saddle Finisher-Y2 only)</b>	
	<b>Paper size</b>	305 x 457mm, A3, A4R
	<b>Staple capacity</b>	1 to 15 sheets (60pages, 64-80g/m <sup>2</sup> )
		1 to 10 sheets(40pages, 81-105g/m <sup>2</sup> )
<b>OTHER ACCESSORIES</b>		Colour UFR II Printer Kit-Q1, Colour PS Printer Kit-Q1
		Direct Printing Kit-F1, 256MB OPTION MEMORY KIT
		Barcode Printing Kit-A1, Web Access Software-E1
		Secure Watermark-A1, Encrypted Printing Software-C1
		HDD Data Erase Kit-A1, HDD Data Encryption Kit-B1
		Digital User Signature PDF Kit-A1, Super G3 FAX Board-W1
		EUR, iR3100C pedestal, Envelope Feeder Attachment - C2
		Platen Cover Type H, Inner 2Way Tray-D1, Finisher-Z1
		Buffer Pass Unit-E2 (For Finisher-Y1/2), Copy Tray-J1
		Puncher Unit-L1/N1/P1, ADF Access Handle-A1, Remote
		Operators Software Kit-A2, Voice Guidance Kit-B1,
		Voice Operation Kit-A1, IR 512MB RAM-C1, Document Tray-
		J1, Key Switch Unit-A2, Card Reader-C1, Card Reader
		Attachment-B1

Some images are simulated for clarity of reproduction. All data is based on Canon's standard testing methods. This leaflet and the specifications of the product have been developed prior to the date of product launch. Final specifications are subject to change without notice.™ and ® All company and/or product names are trademarks and/or registered trademarks of their respective manufacturers in their markets and/or countries. Canon Recommends you use Canon Media for the best results. Please check media (paper) compatibility list to see which variety of paper/media is recommended.

Canon's GENUINE logo means Quality all-round performance. For more information, go to [www.canon-europe.com/Canon\\_Copier\\_Consumable\\_Technology](http://www.canon-europe.com/Canon_Copier_Consumable_Technology)

you can  
**Canon**

**Canon Inc.**  
[www.canon.com](http://www.canon.com)

**Canon Europa N.V.**  
[www.canon-europe.com](http://www.canon-europe.com)

**meap**  
POWERED BY



<Print code>

© Canon Europa N.V., 2006